

BRIGHTQ™ FOR RICOH

Unix and Linux Printing Made Simple

BrightQ™ for RICOH® was developed exclusively for the UNIX and Linux operating systems. BrightQ™ supplies system administrators, IT support personnel, printer support personnel, and anybody who prints via UNIX and Linux, with an easy-to-use, graphically rich, printing environment. This dynamic printing suite is available for nearly all Ricoh monochrome and color printers and Multi-function products.

BRIGHT INSTALL

The package comes with an easy-to-use graphical installation and configuration wizard. The following features were designed to ease the otherwise difficult process of installing and configuring printers on UNIX and Linux systems:

- ▶ Automatic detection of architecture, pre-existing printing installations, kernel and distribution*
- ▶ Automatic detection of the printing system settings
- ▶ Several installation types: full, recommended and customized for advanced users
- ▶ Uninstall allows you to revert back to pre-existing setup

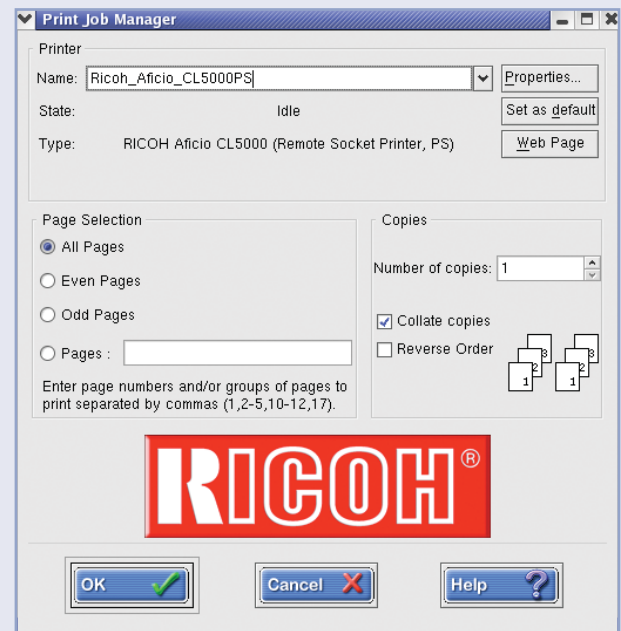


Not only does BrightQ™ provide a sophisticated, graphical printing environment, but it also installs an easy to configure and support service protocol suite. This turnkey package allows users to take advantage of the full functionality of all their Ricoh printers and multi-function devices while still capitalizing on the strength of their UNIX and Linux applications.

PRINT JOB MANAGER

Designed as a substitute for command-line printing tools, the print job manager allows the user to fully access all the features and functionality of the target Ricoh Printers or MFPs:

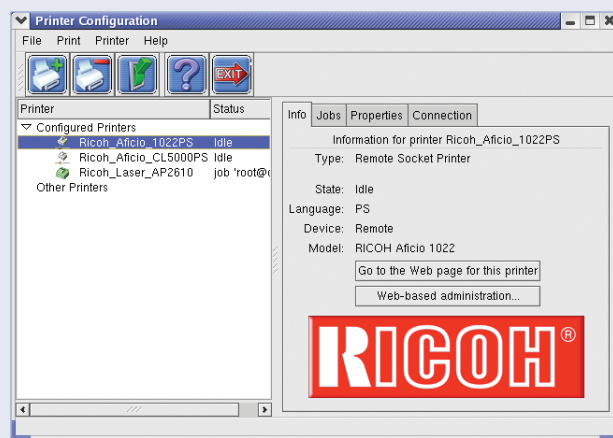
- ▶ Page selection and resizing
- ▶ Collation/Print output order
- ▶ Simplex/Duplex printing
- ▶ Number of pages per sheet
- ▶ Full command line interface
- ▶ Paper source and orientation access to all print job options



BrightQ™ for Ricoh comes complete with **BrightInstall™** (the turnkey installation tool for UNIX and Linux), a **Print Job-Manager, Configuration Tool**, and **support for all common UNIX and Linux printing systems.**

CONFIGURATION TOOL**Basic Features Include:**

- Add/remove printers
- Inspect and manage job queues
- Drag-and-drop jobs from one printer queue to the other
- Pop-up tool tips/help menus
- Adjust system-wide settings for multiple users on multiple printers
- Set user and system default configurations
- Define the service protocols desired for printing i.e. LPD/R, SMB, IPP, etc.
- Software updates from FTP and HTTP sites when available
- Print test page/PostScript® documents
- Automatic software update capacity

**Additional Key Features**

- Ability to administer and use many printers
- Customizable to support printer-specific features or a client's unique needs
- Scalable for use with many types of printers
- Scalable for use with many types of PDL's
- Turnkey network and driver installation
- Auto printcap configuration
- Ability to reconfigure and rename output devices

- Support for MFP extended options, ie. print to mailbox, faxing, stapling, sorting, simplex/duplex, HSL/B color adjustments, electronic collation, booklet printing, etc.
- Full support for command line UNIX and Linux printing via LP/LPR/CUPS

Service Protocols Supported

SMB

IPP

LPR/LPD

Socket/RawTCP

Local Connections

USB

Parallel Port

Print to file

Serial Port

UNIX Operating System Support

Solaris

AIX

HP-UX

IRIX

FreeBSD

SCO

Linux Distribution Support

Red Hat

Mandrake

SuSE

Debian

Slackware

Caldera

* Distribution detection is a Linux-only functionality

** Codehost Inc. reserves the right to modify and or exclude any and or all features in BrightQ™ without notice. Codehost, Inc. reserves the right to exclude any and or all versions of either Linux distributions and or UNIX Operating Systems without notice.

Codehost and BrightQ are Trademarks of Codehost, Inc.

Copyright 2002 Codehost, Inc.



Printed in U.S.A. on recycled paper because Ricoh cares.

Ricoch is a registered trademark of Ricoh Company, Ltd.
All other trademarks are the property of their respective owners. © Ricoh Corporation
RICOH®
 Image Communication

 Ricoh Corporation • Five Dedrick Place, West Caldwell, NJ 07006
 Phone: (973) 882-2000 • Website: <http://www.ricoh-usa.com>